



100% NATURAL INGREDIENTS

## CURCUMA XANTHORRHIZA RHIZOMA

Curcuma Xanthorrhiza Rhizoma is a plant species, belonging to the ginger family that grows in the tropical climate of the Malesia region. It is a medicinal plant with antioxidant and anti-bacterial properties that strengthens the immune system and prevents infections.

The reason for being a very important medicinal plant for women is its many positive effects on the female body, such as reducing cysts and polyps in the mucous skin as well as supporting the body in maintaining a healthy hormone level. It is also known for its antibiotic and anti-fungal properties.

Due to its phyto-estrogenic properties it works as an anti-aging formula for the entire body, especially for women before or during menopause. It helps to tighten the internal and external body tissue, lowers cholesterol levels and has a metabolic effect on fat absorption.

The soothing and anti-septic effect of Curcuma Xanthorrhiza makes it a popular traditional remedy in the treatment of inflammations and skin conditions.

Furthermore it is used to improve digestion, detoxify and cleanse the liver. It is also used for the relief of menstrual cramps and irregular menstruations.



## CURCUMA DOMESTICA (TURMERIC)

Curcuma Domestica has been used for over 4,000 years to treat a variety of conditions. It is also used in Ayurveda and traditional Chinese medicine to treat inflammation and skin irritations.

Curcuma is also a powerful antioxidant. Antioxidants can fight free radicals and may reduce or even help prevent some of the damage they cause. In addition, Curcuma lowers the levels of two enzymes in the body that cause inflammation.

A hydrophilic polyphenol constituent of turmeric elicits strong anti-inflammatory and anti-viral / anti-bacterial properties. It may therefore aid to reduce bacterial and viral infections.

Furthermore Turmeric is an excellent exfoliating agent that rejuvenates the skin.



## ARTEMESIA ANNUA – SWEET WORMWOOD

Sweet Wormwood is native to temperate Asia and blossoms bright yellow with a sweet fragrant camphor aroma. It has been used in traditional herbal medicine in Asia for centuries and today its active ingredients are also used in a variety of modern medical treatments such as malaria.

Its other pharmacological activities include cytotoxicity against cancer cells as well as anti fungal and antibacterial activity.

In Traditional Asian Medicine the herb has been used for over 2000 years to promote digestive function by promoting a healthy intestinal flora and clear out internal infections, toxins and bacteria.

Due to its anti – inflammatory and soothing effect Sweet Wormwood is also used in the treatment of wounds.



## EURYCOMA LONGIFOLIA

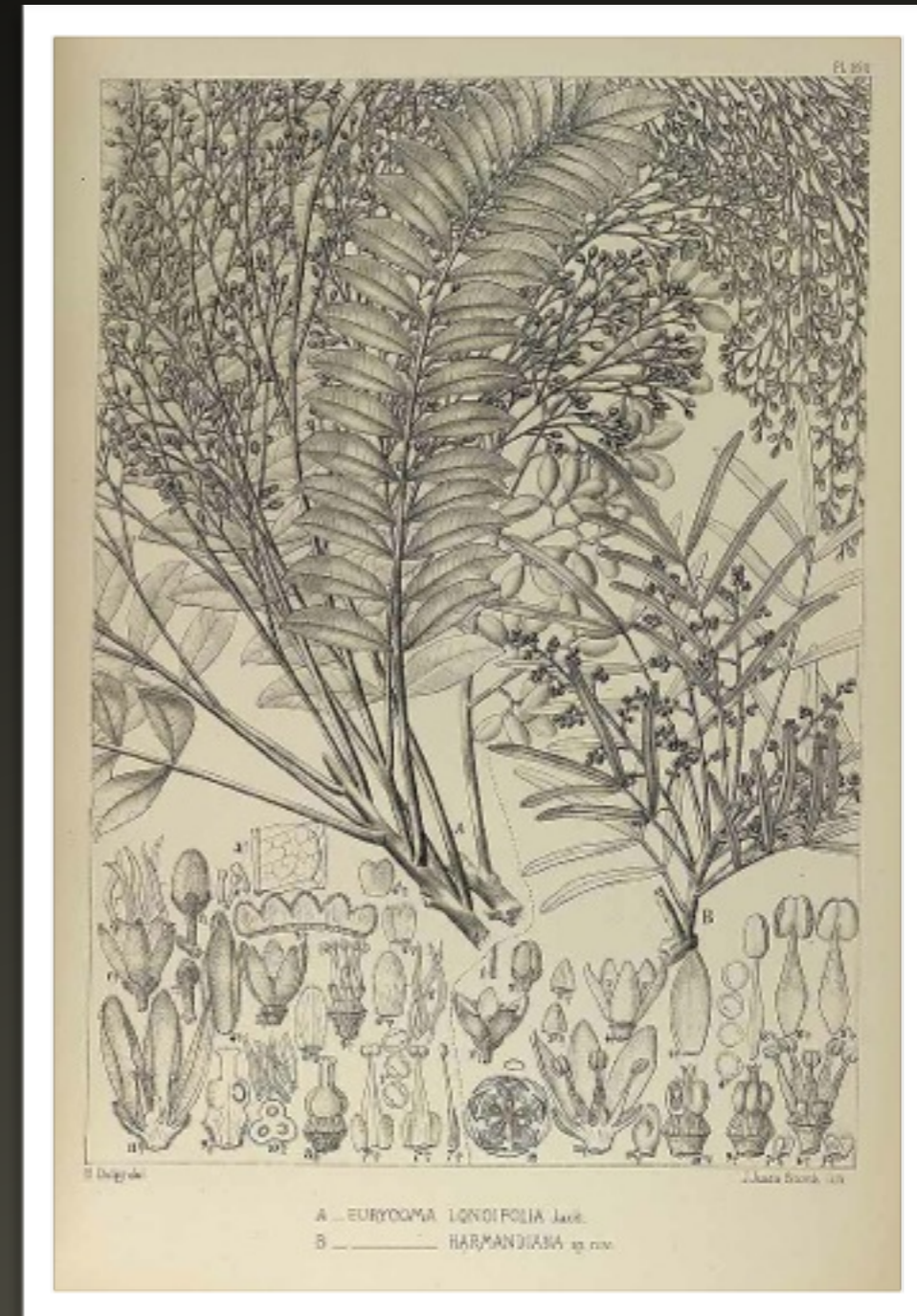
*Eurycoma longifolia* is a small evergreen tree that grows along the hilly slopes of the rain forests of Southeast Asia, including Malaysia, and Indochina.

It has been used as a medicinal herb for centuries in Southeast Asia to improve health, increase vigor and the libido.

*Eurycoma longifolia* is a natural remedy to promote overall sexual health by stimulating sexual activity and organs, which in turn are responsible for the well being and vitality of other organs in the body (bones, heart skin, muscles, cells, etc.)

It is considered the most efficacious botanical for use as an aphrodisiac and has been used for centuries in Southeast Asia for this purpose as well as its amazing rejuvenating and revitalizing properties.

Traditionally it is also being used for its antimalarial, anti-diabetic, antimicrobial, fever reducing activities.



## PIPERIS FOLIUM – RED PIPER BETLE LEAF

Piperis Folium (Red Piper Betle) is considered a sacred crop and referred to as a herbal queen in the plant kingdom, which was formerly exclusively used within the Kingdom of Java island. This plant is believed to bring harmony and heal a multitude of internal diseases.

Red Piper Betle leaf contains all essential amino acids as well as some compounds capable to break down all kinds of internal malfunctions: some of them are Flavonoid, Poleanolad, Alkaloid, Tannin and Asiri oil. Alkaloid, Flavonoid and Poleanolad are anticancerous compounds that are also antibacterial, antioxidant, antiseptic and anti inflammatory.

Red Piper Betle is known to improve the body's metabolic processes as well as purify, enhance natural beauty and healthy skin.

Its antiseptic functions purify the feminine mucous skin and the vaginal secretion while balancing the vaginal flora.



## OAK GALL EXTRACT

Oak Gall extract's astringent qualities as well as anti-bacterial and deodorising properties due to its high levels of tannic and gallic acids.

This material was drawn to the attention of Maimonides (1137-1204), a preeminent medieval Jewish philosopher and physician who promoted the philosophical tradition of Aristotle, the Greek philosopher whose thought had been lost for centuries in the West.

As a physician, Maimonides reported that oak gall was a component of a preparation to restore feminine sexuality. In a work titled *The Inner Secret: A Memorandum for Noblemen, and Tried and True Devices for the Highborn*,\*

Rich in tannins, vitamins A and C, calcium, iron, tannic and gallic acids, fibre, protein and carbohydrates, Oak Gall has excellent astringent and rejuvenating properties and is an ancient beauty secret, well known among Arabs, Persians, Indians, Chinese and Malays, who traditionally used oak galls after childbirth, to cleanse, tone and rejuvenate



## OCIMUM SANCTUM – HOLY BASIL

Ocimum Sanctum (Holy Basil) is cultivated throughout the Southeast Asian tropical regions and has been used for thousands of years in Ayurveda for its diverse healing properties.

Holy Basil is considered to be an adaptogenic, balancing different processes in the body.

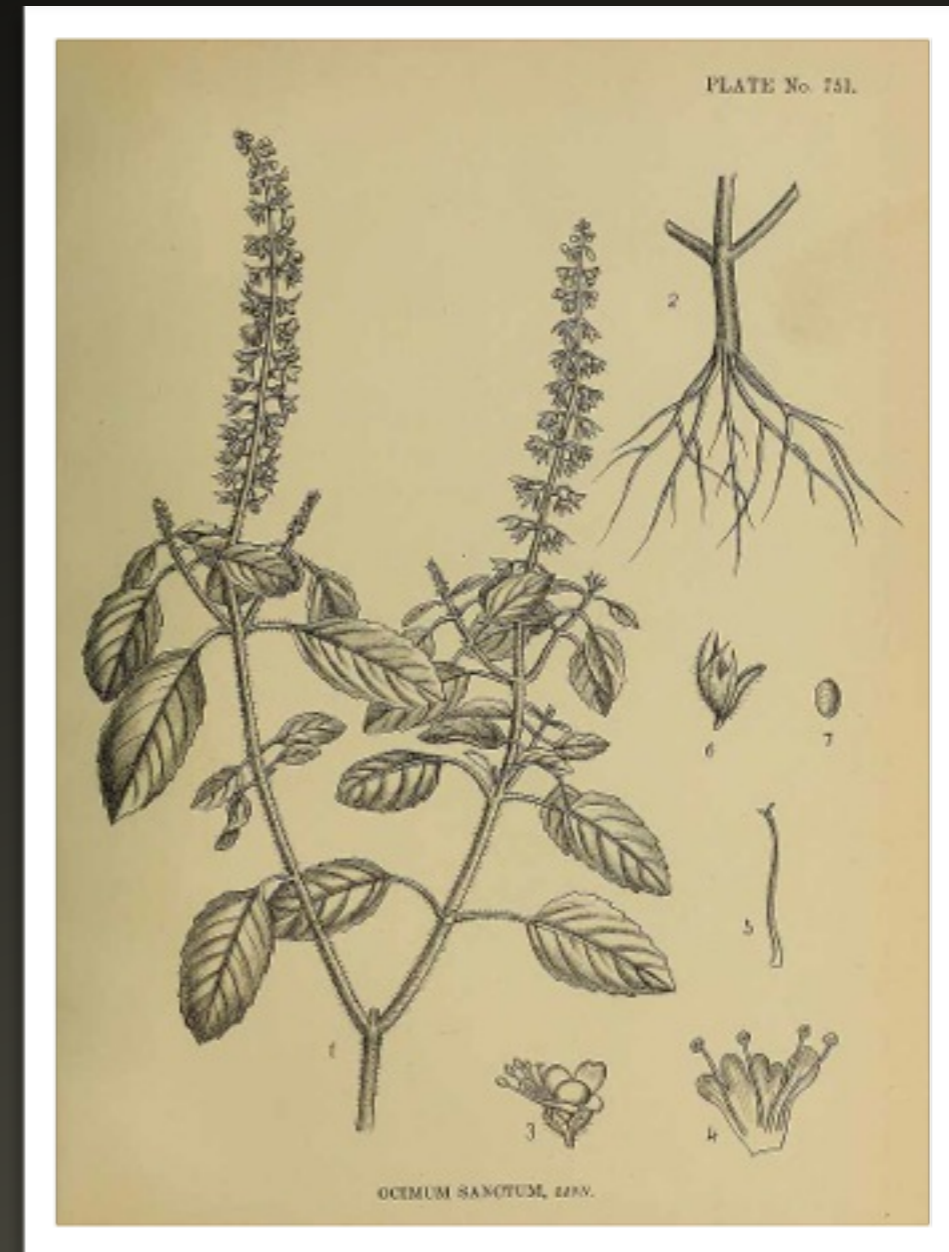
It possesses very strong antioxidant, anti-bacterial, anti-viral, anti-cancerous, detoxifying and immune enhancing properties.

In Ayurvedic medicine, Ocimum Sanctum is used to treat common colds, headaches, stomach disorders, inflammation, heart disease, poisoning and malaria.

The plant also helps to reduce cholesterol and blood sugar levels while it strengthens the kidneys and cardiac system.

Due to its antiseptic and purifying qualities, this wonder herb is one of the essential ingredients in herbal skin care products to relieve skin irritations and maintain healthy skin with a clear complexion.

Furthermore Holy Basil cleanses the blood, re-energizes and rejuvenates the body.

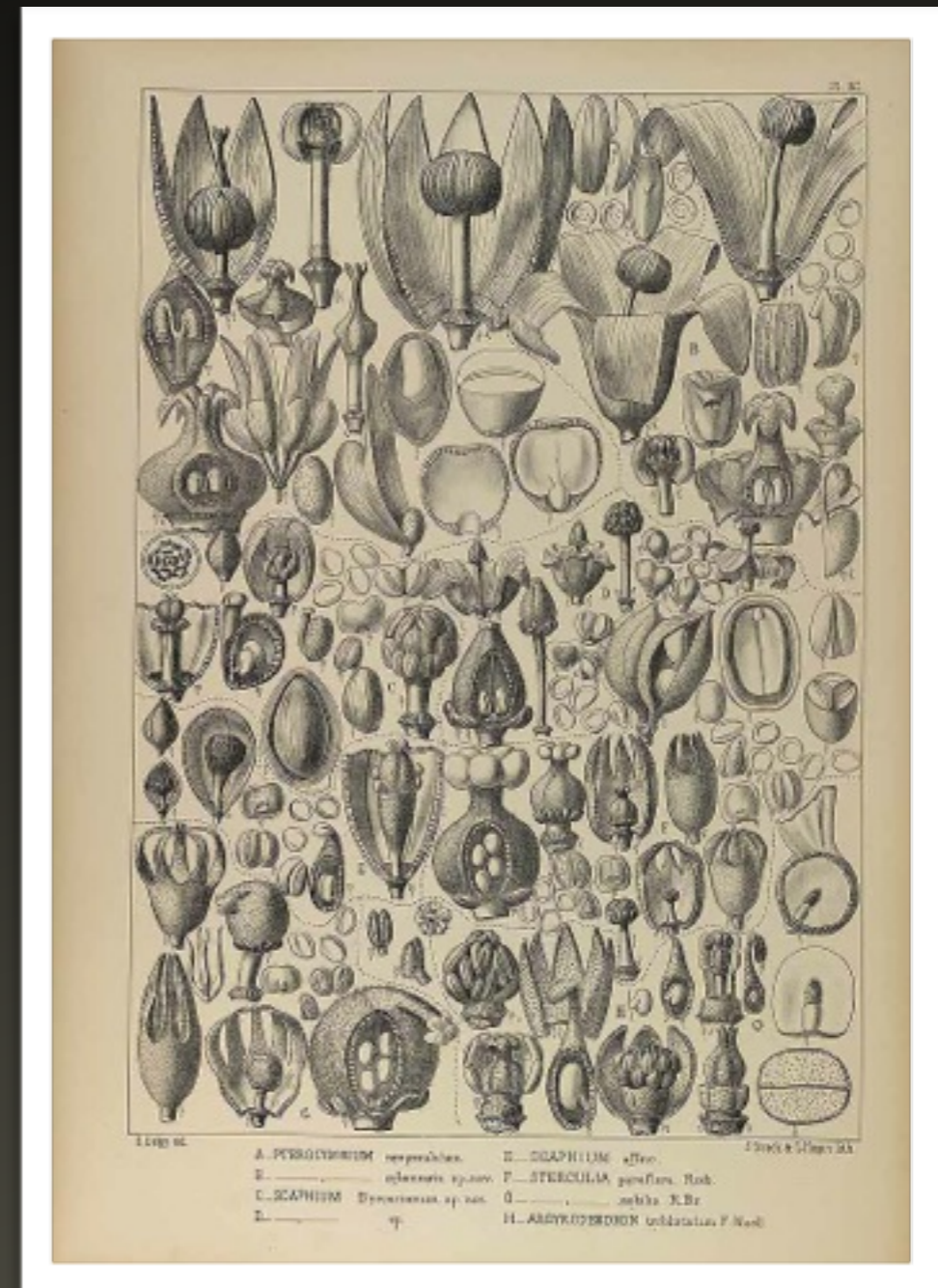




## SCAPHIUM AFFINIS PIERRE – MALVA NUT

The Malva Nut tree is native to mainland Southeast Asia. Its seed is used in traditional Chinese medicine to detoxify the body as well as for gastrointestinal disorders to moisten the bowels and promote bowel movement

The Malva Nut has anti-oxidant and anti-inflammatory properties that relieve irritations and promote healing. It is therefore used as a traditional herbal remedy to soothe mucosal inflammation and diminish vaginal discharge.



## PUNICA GRANATUM

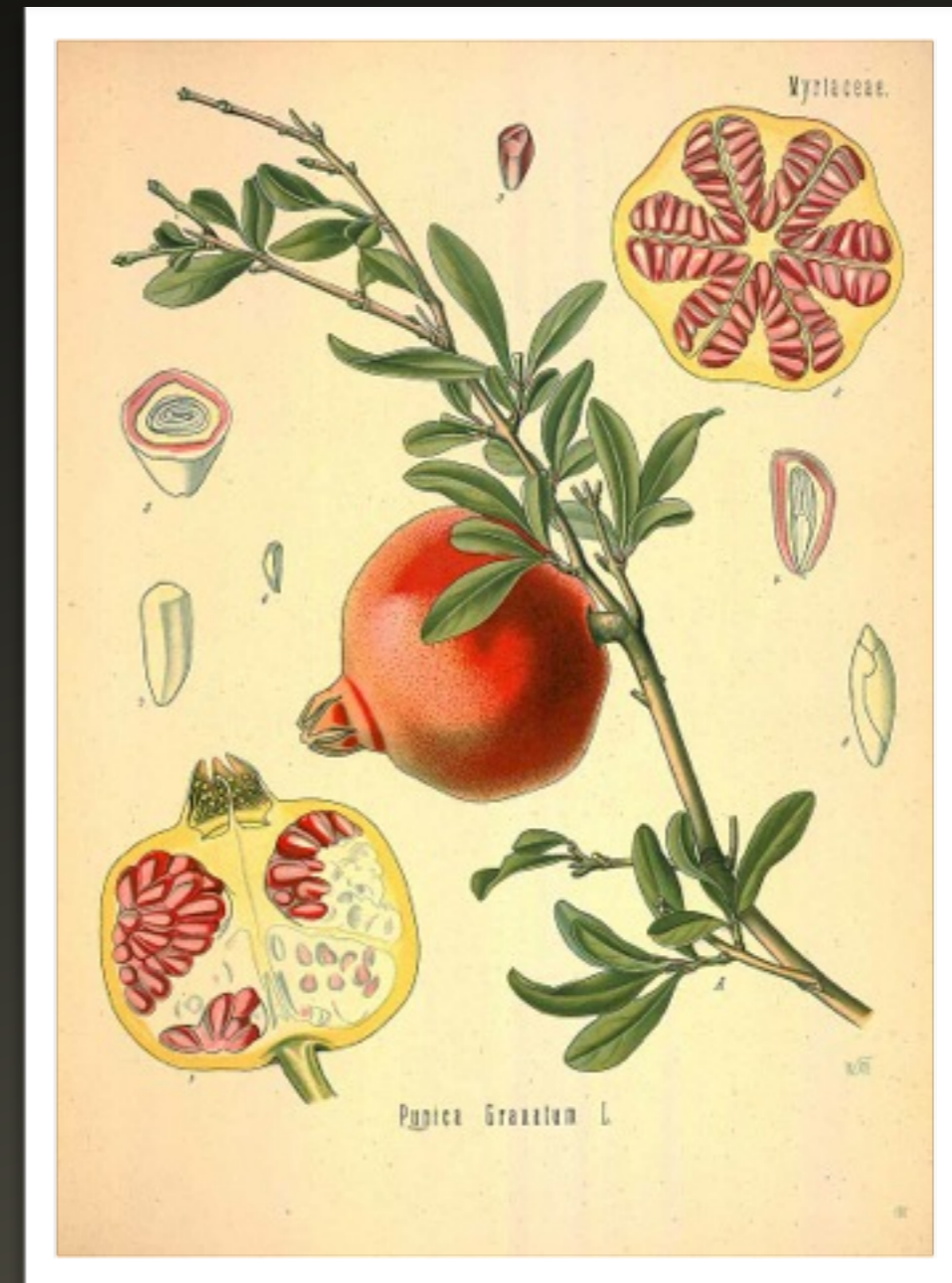
*Punica Granatum* (Pomegranate) is an ancient cultigen in western Asia with great mythological and religious significance. Its oldest testimony was found on a mesopotamic cult vase from the 4th millennium before the Christian era in a temple consecrated to Astarte, predecessor to Isis, Aphrodite and Venus. Already during antiquity the pomegranate was considered the fruit of love and passion; it was the symbol of the goddesses of love.

*Punica* trees become several hundreds of years old. Pomegranates contain high levels of flavonoids, polyphenols and punicalagins which are potent antioxidants. Punicalagins are compounds only found in pomegranates. They protect our cells from damage and aging, while promoting healthy cell renewal and regeneration.

Polyphenols in turn kill cancer cells, prevent the growth of tumors and promote healthy cells.

Punicas are a source of fibre, potassium, vitamin C, vitamin K and B vitamins, including folate, a B vitamin responsible for synthesizing and repairing DNA.

The fruit's rind has an astringent effect and is furthermore known to have styptic, cleansing, antibacterial, anti-fungal and regenerating properties. *Punica* seeds contain an oil, which contains estrone (phytoestrogen), in the highest concentration found in any botanical species.

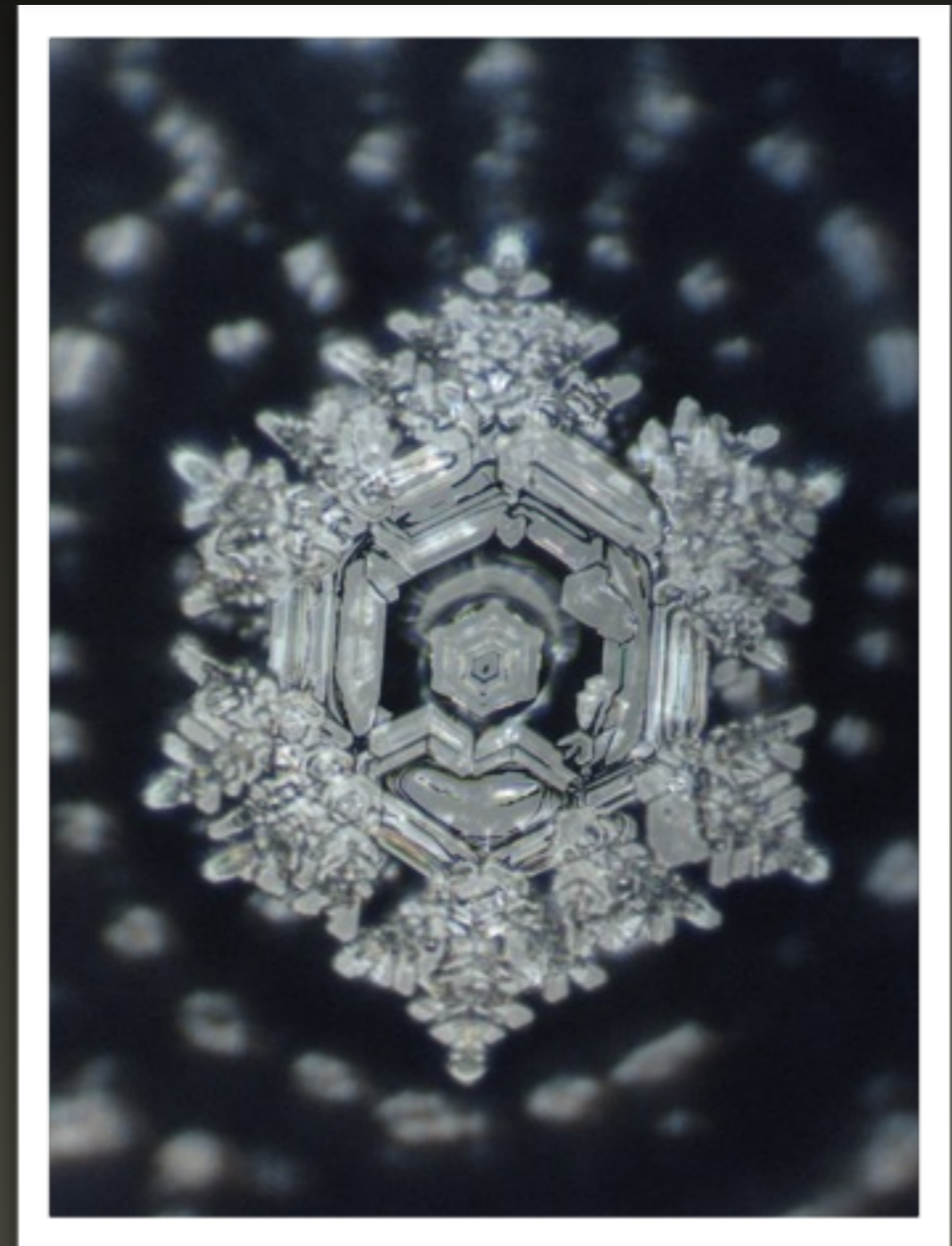


## ARTESIAN MOUNTAIN SPRING WATER

A perfect crystalline structure of the water molecules is important in order to amplify Secret Ceres' synergetic effects of the natural ingredients it contains.

Artesian water is considered 'ripe' water. As opposed to water from a regular source it has been filtered and mineralized throughout millions of years until it developed levitating powers to protrude to the mountain's surface by itself, as a result of having completed a full cycle, by which the water

The crystalline structure of the water in turn affects the crystalline structure of the substances it gets in contact with. A perfect water crystal can be determined by its geometric tetrahedral structure.



## KAOLIN

Kaolin (china clay) is a crystalline mineral (kaolinite) formed over several millions of years by the hydrothermal decomposition and transformation of silicate rock. In its purest form it is snow-white, inodorous and nearly tasteless.

Kaolin is named after the hill in China (Kao-Ling) where it was first mined many years before its discovery in Europe. It has been used in Asia for more than 2500 years to produce porcelain.

Due to its purifying, anti-inflammatory and astringent properties Kaolin is a frequently used base ingredient in the production of cosmetics. Kaolin draws out impurities and toxins, while dead skin cells are removed. The mineral stimulates the skin's renewal process and revitalized the skin. Its antiseptic, deodorizing and soothing properties leave the skin purified, supple and ultra-smooth. Kaolin serves as a carrier and guarantees an even release of Secret Ceres' active ingredients.

Across Africa, the consumption of Kaolin is still a common practice among women today. Especially pregnant women eat Kaolin on a regular basis due to its high mineral content. This practice is also still common in Australia and Indonesia as treatment for bacterial infections. In the Greek and Roman empire holy clay tablets were widely traded throughout the Mediterranean region and Western Europe as cures.



## ALUNITE

Alunite was used by ancient Chinese and Egyptian cultures in crystal healing and to reduce body odor. It has been related to the heart chakra, although it is more commonly related to the sacral and root chakra.

Alunite's metaphysical properties can help balance yin/yang, physical and emotional energies as well as environmental energies, by bringing unbalanced or dysfunctional energies into harmony. Therefore, Alunite has a very stabilizing and grounding effect.

By placing Alunite in a corner of a room it will balance the energies within the space that surrounds it. It is also beneficial in the arts, heightening creativity while simultaneously grounding that creativity in current reality, thus bringing creative arts to life.

The symmetry of Alunite is the same as those of the Tourmaline group. Crystals of Alunite however form octahedral crystals unlike those of the typical tourmaline mineral.

This Alunite was formed millions of years ago and is collected in the shallow parts of the ocean . It is also termed 'Star Crystal' due to its bright and shiny reflection under the water, the means by which it is found during full moon and thereafter separated from the outer calcified layers of rock that surround it.

